

Integrating Net2 with Milestone software

Overview

Net2 allows the integration of Net2 Events and the stored images from the camera software.

This means that when security operators want to see what has caused an event, they can simply double-click on an event record and review the stored video images.

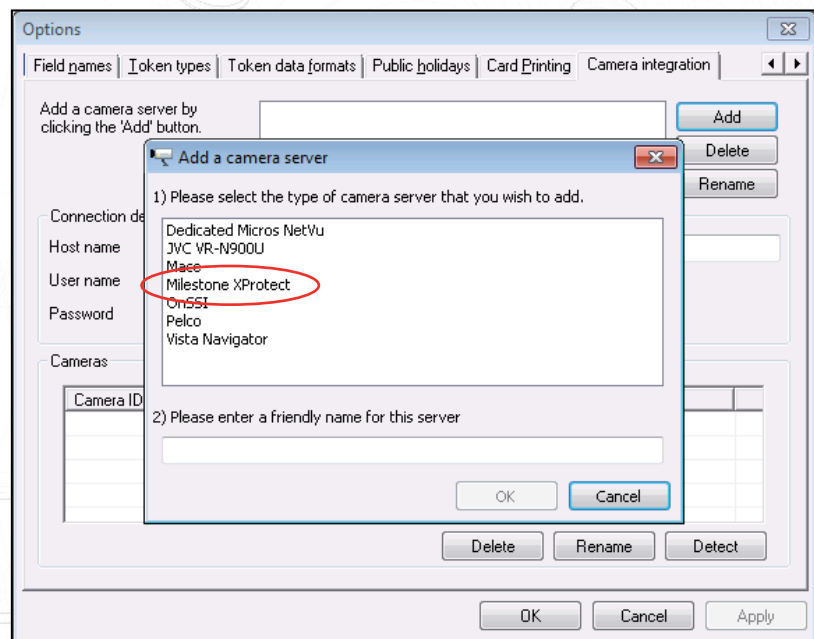
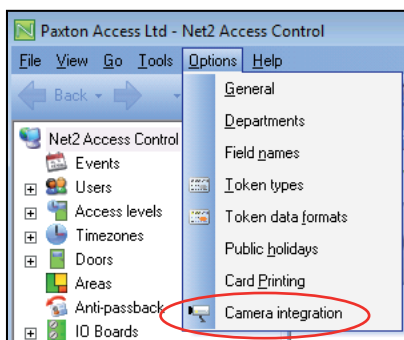


Milestone Integration

The camera software must be installed, configured and running on the Milestone server before you can configure the option on Net2. Browse to the Milestone software server with Internet Explorer and click on the Remote Client link and log in.

Once that has been completed, go into the Options menu on Net2 and select 'Camera integration'. Click on the Add button and select the Milestone XProtect option from the list. Add a server name and register the server by clicking OK.

Net2 software before v4.13 requires the Milestone XProtect feature to be enabled before the configuration screen can be viewed.



Run the Net2 Server Configuration Utility, click on the Features tab and select the Milestone Xprotect option.

You must now restart the Net2 Server. Right click on the server icon and select Close. When you restart the Net2 application the Options menu will then contain a Milestone XProtect tab. Click on this tab. (Shown as the Camera integration Tab in later displays within this document)

Milestone Integration (Net2 before v4.12)

Net2 software before v4.12 requires the Milestone remote client software to be loaded on the Net2 server PC. The remote client can be downloaded from the Milestone website. If using v5 of Milestone XProtect you can browse to the Milestone server through Internet Explorer and download the remote client software package.

Run the file and then follow through the steps of the installation wizard. Once this has been successfully installed the Net2 Server will need to be closed by right clicking on the server icon and selecting Close. Use the shortcut on the desktop to open the Remote Client program. Enter the user account details and connect. Once connected there is no need to configure the browser further and the application can be closed. Start Net2 and it will automatically recognise that the XProtect Remote Client has been installed and can now be configured.

If there are still problems loading the Client software, you are advised to upgrade to Net2 v4.12 or later as this has the client software built in.

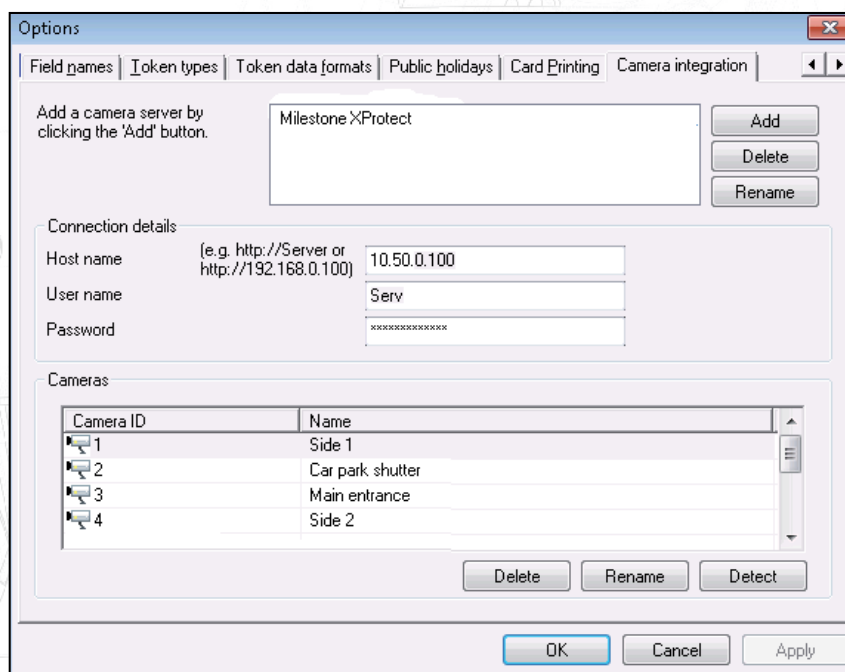
Software configuration

Select 'Camera Integration' from the Net2/Options menu. Here we enter the settings for the server running Milestone. These settings only need to be configured on the Net2 server; all Workstations will access this information through the server.

Enter the Host name of the machine that Milestone is installed on, e.g. `http://Milestonesvr`, and then the user name and password.

Net2 will automatically add cameras that are in Milestone software by clicking on the Detect button. The cameras can be renamed if required.

(This procedure will need to be done on all Workstations that need to view images if using Net2 v4.12 or earlier.)

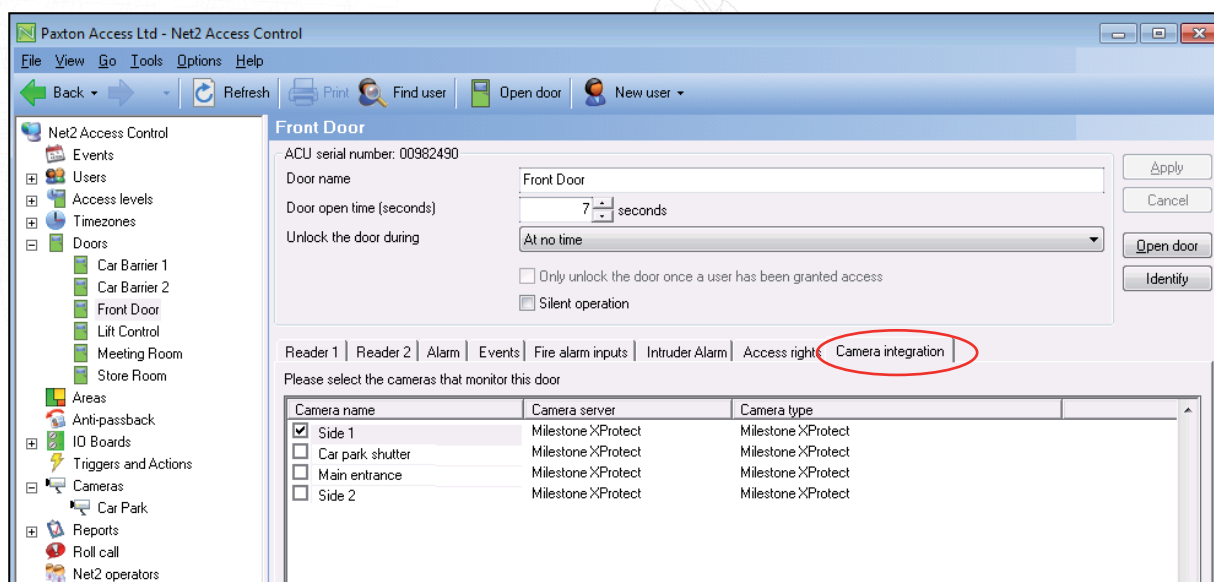


Doors

Any door that is to be associated with a camera now needs to be configured.

Click on the Door in the tree view and select the Camera Integration tab.

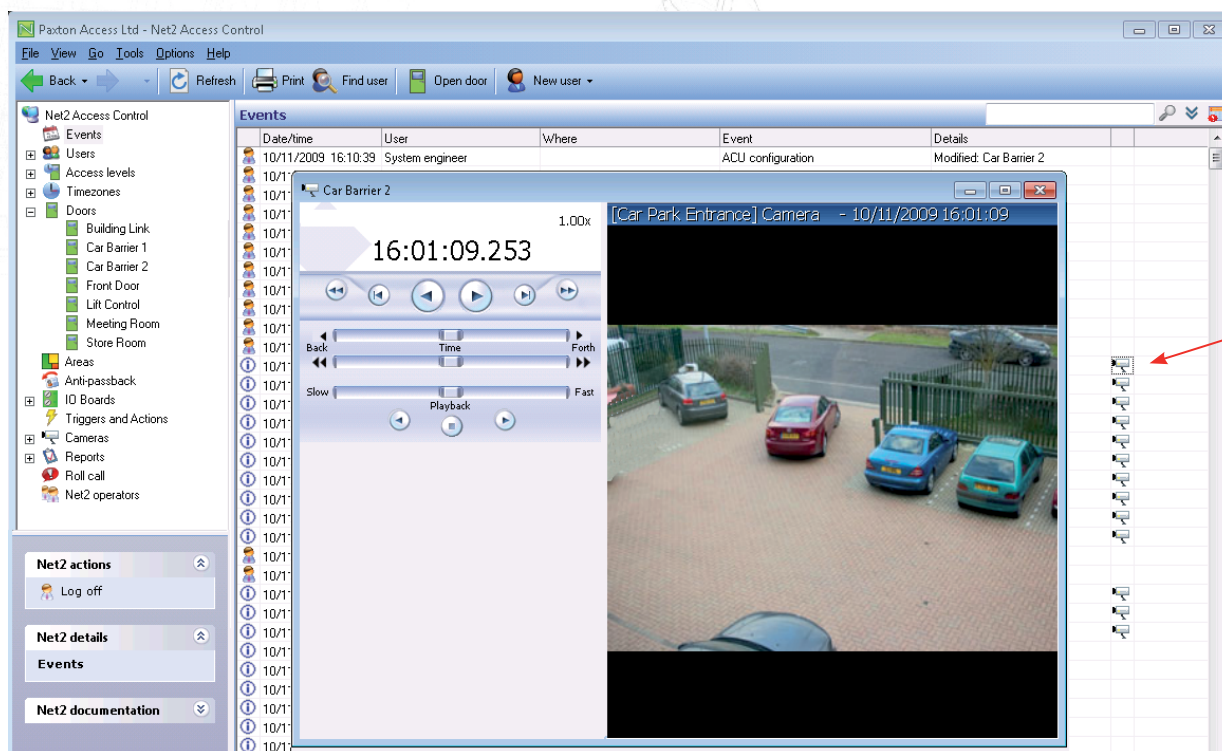
Place a tick against the camera to be associated with this door and Apply. Multiple cameras can be selected from the list.



Events

Doors that have been associated with a camera show an additional icon beside the event.

Double-clicking the icon displays the stored video images showing the event taking place.



It is recommended that Milestone be installed on a dedicated server.

Net2 v4.12 and earlier is compatible with Milestone XProtect Enterprise and Professional versions.

Net2 v4.13 and later also allows integration with Milestone XProtect Corporate.

NOTE: Milestone integration fails to work when the Milestone management software is on one PC and recording software on another.